

enz[®]-Bulldozer

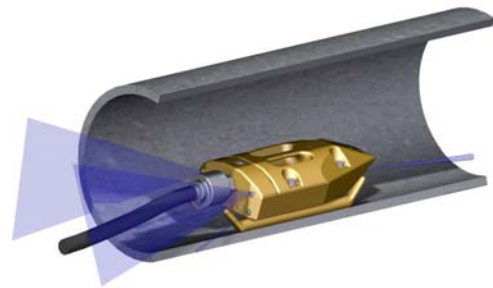
A successful improvement in channel and pipe cleaning. The enz[®]-Bulldozer has a hydrostatic chamber, herewith reducing water turbulences and improving the flow dynamic to the ceramic inserts. The result is a compact, aggressive and most effective water jet not attained up to now. An optional forward jet, on all enz[®]-Bulldozer Nozzles, clears the debris ahead of the advancing unit. If desired, the front-jet can be closed by a blind plug. Two additional nozzles, set slightly higher, clean the sides of the channel.

Characteristics

- enormous flushing capacity = reduced water consumption
- immense water acceleration = superb flushing effect
- low compact design = very good cleaning of ground in channels with large water passage
- the replaceable rounded skids give the Bulldozer excellent gliding ability

Applications

- The low and compact construction allows cleaning pipes with heavy debris.



enz[®]-Bulldozer

enz[®]-Bulldozer 3/4" - 1 1/2"



50.075G

	3/4
	8 - 40
	26
	4 × M10 2 × FanJet M10
	1 × M10
	15.7 × 5.9 × 4.3
	26.67
	3,625
	✓



50.100G

	1
	12 - 60
	40
	6 × M10 2 × FanJet M10
	1 × M10
	19.1 × 7.9 × 5.1
	56.67
	3,625
	✓



50.125G

	1 1/4
	16 - 100
	79
	6 × M10 2 × FanJet M10
	1 × M10
	23.8 × 9.8 × 6.5
	83.35
	3,625
	✓



50.150

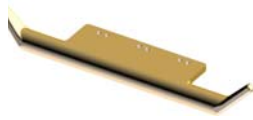
	1 1/2
	20 - 180
	105
	6 × M10 2 × FanJet M10
	1 × M10
	25.8 × 11.8 × 6.7
	120.00
	3,625
	✓



	Connecting thread [inch]		Thrust jet		Weight [lb.]
	Application range [inch]		Front jet		Recycling
	min. gpm at 1450 psi at the nozzle		Jet angle backward		Maximum pressure [psi]
	Length × Width × Height [inch]		Measures [inch]		

enz[®]-Bulldozer

Accessory and wearing parts



Spare skids

0050.0753G → enz[®]-Bulldozer 50.075 (left/right)

0050.1003G → enz[®]-Bulldozer 50.100G (left/right)

0050.1253G → enz[®]-Bulldozer 50.125G (left/right)

0050.15031 → enz[®]-Bulldozer 50.150 (left)

0050.15032 → enz[®]-Bulldozer 50.150 (right)



Flat runner

0050.07510 → enz[®]-Bulldozer 50.075G (wear-resistant)

0050.10010G → enz[®]-Bulldozer 50.100G (wear-resistant)

0050.12510G → enz[®]-Bulldozer 50.125G (wear-resistant)

	Connecting thread [inch]		Thrust jet		Maximum pressure [psi]
	Application range [inch]		Front jet		Recycling
	min. gpm at 1450 psi at the nozzle		Jet angle backward		
	Measures [inch]		Weight [lb.]		