

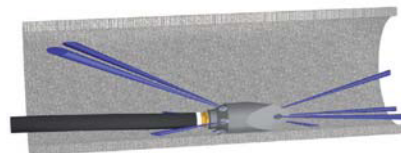
Usmerene brizgaljke

Koncentrisana, moćna napredna mlaznica uz pomoć 4 prednje brizgaljke. Oštre ivice seku, lome i ulaze kroz svaki vid blokade. Napravljena je od ojačanog čelika koji je otporan na oštećenja. Sve brizgaljke od artikla 60.050 nadalje su opremljene keramičkim završecima. Zbog toga je efikasnost veoma velika u odnosu na brizgaljke koje imaju probušene rupe i dugoročnost je nekoliko puta veća.

Primena

- Probijanje kroz potpuno zapušene cevi
- Otvaranje isprepletanih korena
- Otvaranje zamrznutih cevi
- Ispiranje hidrauličnim potiskom

Radni pritisak do 250 bar



Usmerene brizgaljke

Usmerene brizgaljke 1/8" - 1 1/4"



60.012SL15

60.025SL15

60.025SL30

60.038-30

60.038-60



1/8

1/4

3/8



20 - 40

22 - 50

28 - 100



15

20

30

61.3



3 × Ø 0.95

3 × Ø 0.90

4 × Ø 1.35

3 × Ø 1.30

3 × Ø 1.50



4 × Ø 0.50

4 × Ø 0.60

4 × Ø 0.70

4 × M4

4 × M4



20°

20°

20°



15°

15°

15°



16 × 25

19 × 33

25 × 45



20

30

70



—

—

—



60.050

61.0504

61.050



1/2

1/2



40 - 150

40 - 150



50

50



3 × M6

3 × M6



4 × M4

3 × M4



20°

20°



15°

15°



31 × 55

31 × 55



140

140



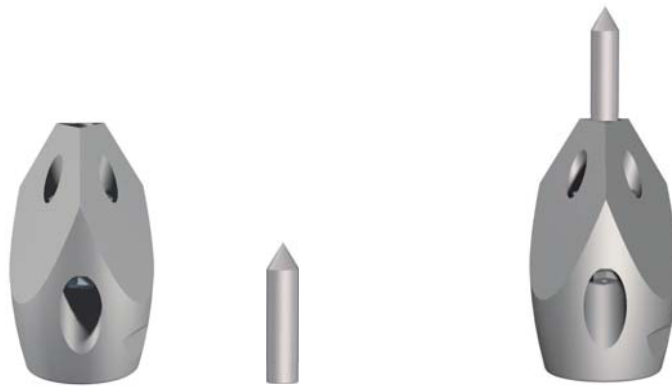
x

x

High Performance Tool golden jet®

	Connecting thread ["]		Front jet		Weight [g]
	Application range [mm]		Jet angle backward		Recycling
	min. l/min at 100 bar		Jet angle forward		
	Thrust jet		Measures [mm]		

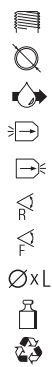
Usmerene brizgaljke



60.075

61.0504

61.075



3/4
60 - 250
100
3 × M6
4 × M4
20°
15°
38 × 80
320
x

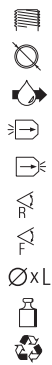
3/4
60 - 250
100
3 × M6
3 × M4
20°
15°
38 × 80
320
x



60.100

61.1004

61.100



1
100 - 300
150
6 × M6
4 × M6
20°
15°
48 × 90
505
x

1
100 - 300
150
6 × M6
3 × M6
20°
15°
48 × 90
505
x

	Connecting thread ["]		Front jet		Weight [kg]
	Application range [mm]		Jet angle backward		Recycling
	min. l/min at 100 bar		Jet angle forward		
	Thrust jet		Measures [mm]		

High Performance Tool

enz golden jet®

Usmerene brizgaljke



	60.100L	60.100L80	60.125
	1	1	1 1/4
	150 - 400	150 - 500	150 - 400
	200	200	200
	6 × M10	5 × M10	6 × M6
	3 × M8	4 × M8	4 × M6
	1 × M6		
	20°	10° + (30° blind)	20°
	15°	15°	15°
	68 × 185	79 × 218	58 × 100
	2.60	4.68	0.83
	x	x	x



	60.125L	60.1254
	1 1/4	
	200 - 800	
	200	
	5 × M10	
	4 × M8	
	10° + (30° blind)	
	15°	
	98 × 258	
	8.30	
	x	